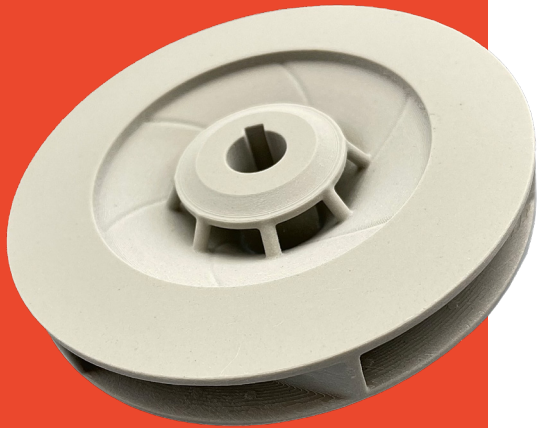


# LOW SHRINK ALUMINUM SILICATE (LS-AS)

WHAT'S IN  
YOUR  
RESIN?



## MATERIALS DATA SHEET

PROPERTY	METRIC
Sintered Density (g/cc)	2.46
Shrinkage (X%, Y%, Z%)	4% / 4% / 6%
Flexural Strength (MPa)	31
Compressive Strength (MPa)	44
Max Operating Temperature (°C)	1450
Thermal Shock Resistance (°C)	~1000
Coeff. Of Thermal Expansion (J/g*K)	1.9 x 10 <sup>6</sup>
Dielectric Constant	2.78
Largest Feature Thickness (mm)	10
Smallest Feature Thickness (mm)	0.75
Smallest Hole/Channel (mm)	2

**Note:** Actual flexural strength and flexural stiffness outcomes are very dependent on sintering protocols and equipment